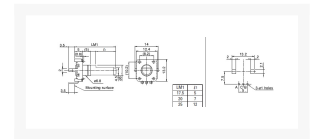
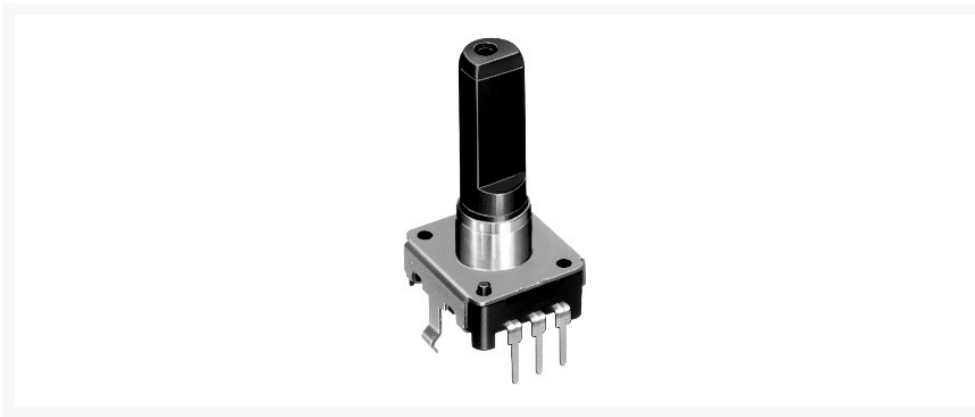


## ENCODER EC12 12 PULS

€ 1,75

Excl. BTW: € 1,45

### Afbeeldingen



### Beschrijving

#### Features

- Compact design
- Number of pulse: 12,15 or 24
- Mechanical angles 360°
- Optionally with push-on switch



#### Technical Specifications



|                              |                 |
|------------------------------|-----------------|
| Rating Voltage:              | 5V DC           |
| Input Current                |                 |
| EC12E:                       | 0,5mA           |
| EC12D:                       | 1mA             |
| Insulation Resistance (Min.) |                 |
| EC12E:                       | 10MOhm / 50V DC |

|                            |                               |
|----------------------------|-------------------------------|
| EC12D:                     | 100MΩ / 250V DC               |
| Dielectric Strength (1Min) |                               |
| EC12E:                     | 50V AC                        |
| EC12D:                     | 300V AC                       |
| Operating Torque           |                               |
| EC12E_:                    | 3 <sup>±2</sup> Nm*m          |
| EC12D_:                    | 10 <sup>±3</sup> Nm*m         |
| Rotation Angle:            | 360°                          |
| Lifetime:                  | 30x10 <sup>3</sup> Operations |
| Switch Specifications      |                               |
| Contact                    | SPST-NO                       |
| EC12D_:                    | 1mA / 5V DC                   |
| Temperature Range          |                               |
| EC12E:                     | -10°C...+70°C                 |
| EC12D:                     | -40°C...+85°C                 |



## Selection Table

| Part Nr.     | Design         | Number<br>of Detent | Number<br>of Pulse | Travel<br>of Switch<br>[mm] |
|--------------|----------------|---------------------|--------------------|-----------------------------|
| EC12E1220405 | plain collar   | 12                  | 12                 | -                           |
| EC12E24204A9 | plain collar   | 24                  | 24                 | -                           |
| EC12E2420801 | with bushing   | 24                  | 24                 | -                           |
| EC12D1564402 | push-on switch | 30                  | 15                 | 0,5                         |

---

|               |            |
|---------------|------------|
| Artikelnummer | 12E1220405 |
| Merk          | ALPS       |
| Is on Sale    | Nee        |



## Productinformatie