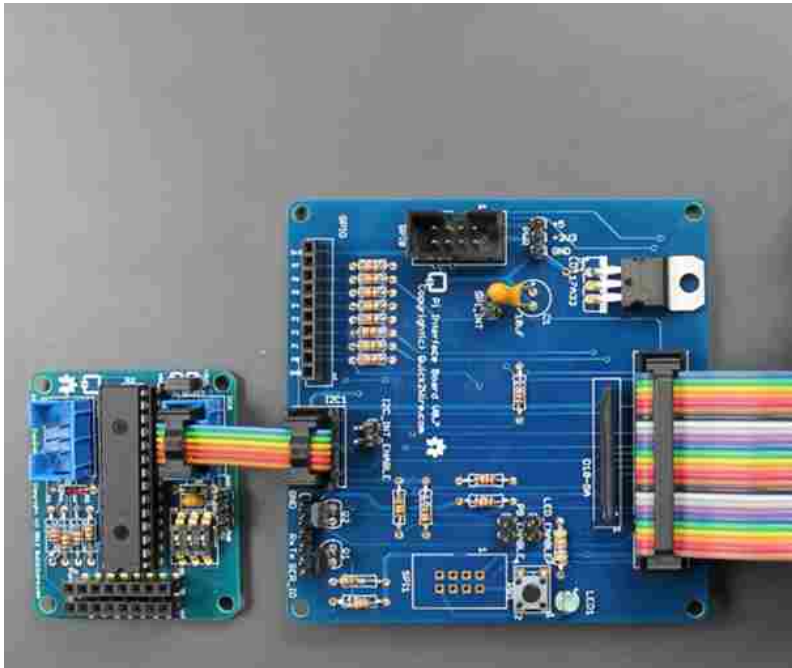


## RASPBERRY PI EXPANDER COMBO KIT

€ 36,75

Excl. BTW: € 30,37

### Afbeeldingen



### Beschrijving

**Interface Board** The Quick2Wire interface board gives you complete access to all the GPIO features on the Raspberry Pi expansion header. The expansion board connects to the raspberry pi using a 26way ribbon cable and x2 6 way ribbon cables for extending to other expansion boards. The quick2wire board comes with an array of diodes to protect the GPIO pins in case of incorrect wiring or accidental shorting.

8 General Purpose I/O (GPIO) pins  
Ground, 3.3 volt and 5 volt supplies  
An Inter-Integrated Circuit (I2C) interface  
Serial-Peripheral Interface (SPI) interface  
Serial communications

**Port Extender** The port extender board gives you an additional 16 GPIO pins to use, which can be used as digital input or output. The port extender board connects to the interface board using an 6 way ribbon cable.

All expansion boards are supplied with the relevant components and come in kit form to be soldered

## Productinformatie

---

Artikelnummer	RBPECK
Merk	QUICK2WIRE
Is on Sale	Nee

